

**ÖZKARTALLAR CAMPAK JOINT VENTURE**

*Sikandriya workshop 2*



**Solid Waste Management  
Plan For  
Gulshan-e-Ravi  
(UC-89)**

*By*

*Muhammad Noman*

*Deputy Manager Operations*

**Özkartallar Campak Joint Venture**  
**Sikandriya workshop 2**

## Contents

.....	0
<b>1. Facts</b> .....	2
<b>2. Operational Arrangements / Resources Deployed</b> .....	2
2.1 1 <sup>st</sup> Shift Arrangement – 6 AM to 2 PM.....	2
2.2 2 <sup>nd</sup> Shift Arrangement - 2 PM to 10 PM.....	3
<b>3 Introduction</b> .....	Error! Bookmark not defined.
<b>4 Solid Waste Generation</b> .....	Error! Bookmark not defined.
<b>5 Solid Waste Management Practices</b> .....	Error! Bookmark not defined.
<b>6 Street Sweeping and Waste Collection by Sanitary Workers</b> .....	Error! Bookmark not defined.
6.1 Team Division .....	Error! Bookmark not defined.
<b>7 Solid Waste Storage</b> .....	Error! Bookmark not defined.
7.1 Waste Storage Facility.....	Error! Bookmark not defined.
7.2 Existing Points of Containers.....	4
<b>Existing Points of Containers</b> .....	6
<b>8 Solid Waste Collection &amp; Transportation</b> .....	6
8.1 Route for Compactor .....	6
8.2 Staff Deployment for Compactor Vehicle .....	7
<b>9 Door To Door Waste Collection</b> .....	8
9.1 System for D-T-D Waste Collection .....	8
<b>10 2nd Shift Operational Arrangement</b> .....	10
<b>11 Problematic Areas</b> .....	11
<b>12 Open plots</b> .....	12
<b>13 Public Awareness</b> .....	13

**Özkartallar Campak Joint Venture**  
**Sikandriya workshop 2**

**1. Facts**

SR.N	Description	
1	Phase	B
2	UC	89 –Gulshan e Ravi
3	Area Deputy Manager	Muhammad Noman
4	Zonal Officer LWMC	Jahanzaib Bhatti
5	Population	57662
6	UC Area	1369568 m <sup>2</sup> (middle income)
7	Waste Generation (estimated)	37.48 kg/person/day

**2. Operational Arrangements / Resources Deployed**

**2.1 1<sup>st</sup> Shift Arrangement – 6 AM to 2 PM**

<b>Manual Sweeping</b>		
Sanitary Supervisors	2	
Sanitary Workers	52	
Wheelie Bins	4	
Hand Carts	17	
Special Gang		
Sanitary Workers	17	
Sanitary Supervisor	1	
Note: Special Gang solely on Deputy manager / ZO's disposal to attend important complaints and to work for absent workers beats of the day		
<b>Containers Collection</b>		
Containers Placed	46	1 trip, approx. 8 to 10 tons each
Containers Points	21	
Compactors	C13-1038	
Drivers	1	
Helpers	2	
<b>D-T-D Collection</b>		
Mini Dumpers – Suzuki Pickup	1	MD-06
Driver	1	
Helper	1	
Note: Compactor also collecting waste if waste bags found on road or in front of home or shop		

**Özkartallar Campak Joint Venture**  
**Sikandriya workshop 2**

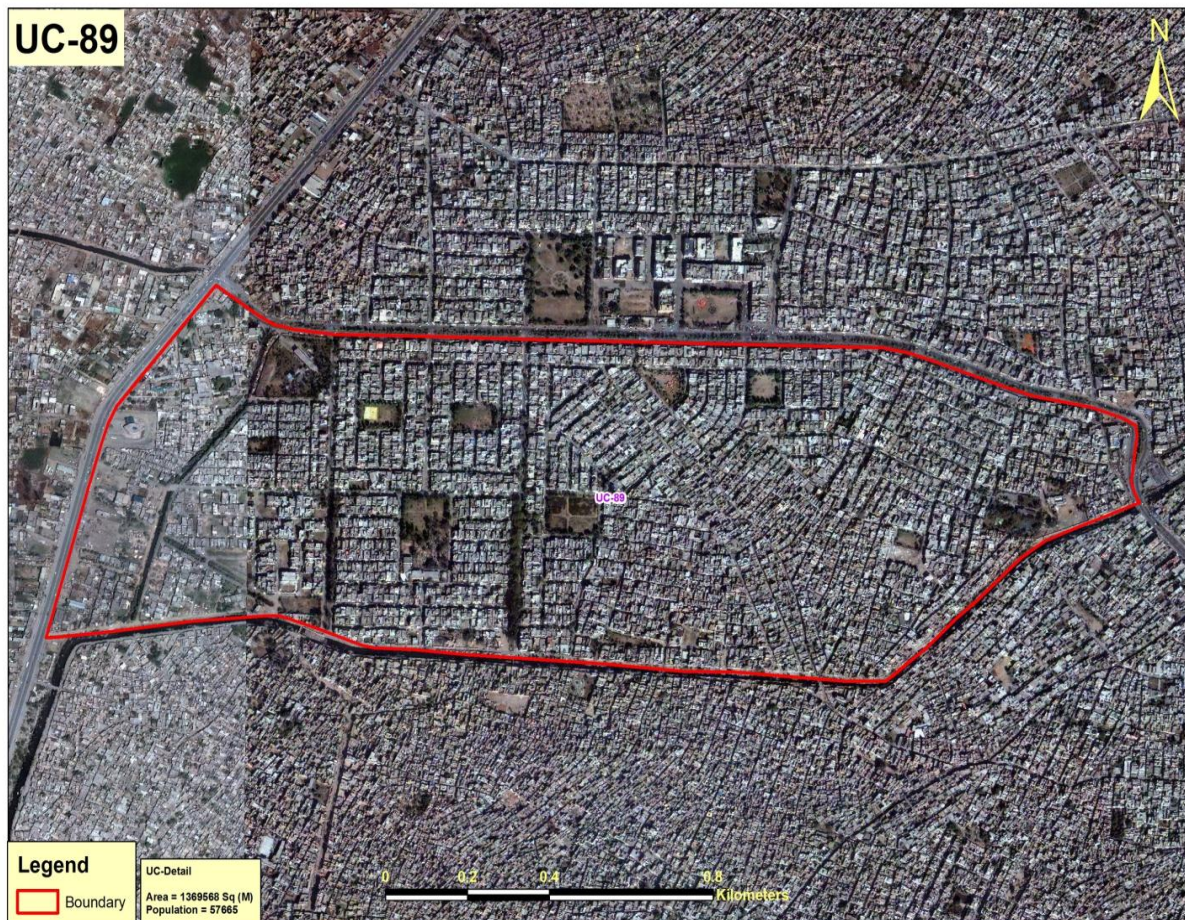
2.2 2<sup>nd</sup> Shift Arrangement - 2 PM to 10 PM

Manual Sweeping - Special Gang		
Shift In-charge	1	
Sanitary Workers	28	
Note: for taking care of whole Zone-18, attending major roads, markets, 1139 complaints and to coordinate compactors and ensure containers collection.		
Containers Collection		
Compactors	1	C-1112, 1 trip (approx. 8 to 10 tons)
Note: attending 3 UC's 88, 89 & 90		

**3 Introduction**

Union Council – 89 (Gulshan-e-Ravi) is located in Samanabad Town. Total area of the UC is 1369568 m<sup>2</sup> with population of 1369568 m<sup>2</sup>. This area is predominantly middle income area with planned settlement.

Figure 1: Map of UC 89



**Özkartallar Campak Joint Venture**  
**Sikandriya workshop 2**

#### **4 Solid Waste Generation**

Estimated solid waste generation is 37.48 tons per day @ waste generation rate of 0.65 kg/person/day.

#### **5 Solid Waste Management Practices**

This area is under control of M/s. OZPak J.V for solid waste management. Existing arrangements for SWM based upon actual operations are as follows:

#### **6 Street Sweeping and Waste Collection by Sanitary Workers**

##### **6.1 Team Division**

Teams are divided according to equivalent sweeping length of the area.

- Solid waste is collected by sanitary workers from streets & households and hauled to container by wheelie bins / hand carts.
- Waste bags also used for roads sweeping

#### **7 Solid Waste Storage**

##### **7.1 Waste Storage Facility**

- Currently 36 waste storage containers are placed at 16 different points.
- Storage capacity is 7 tons in one time lifting
- Lifting is operational in 1 time

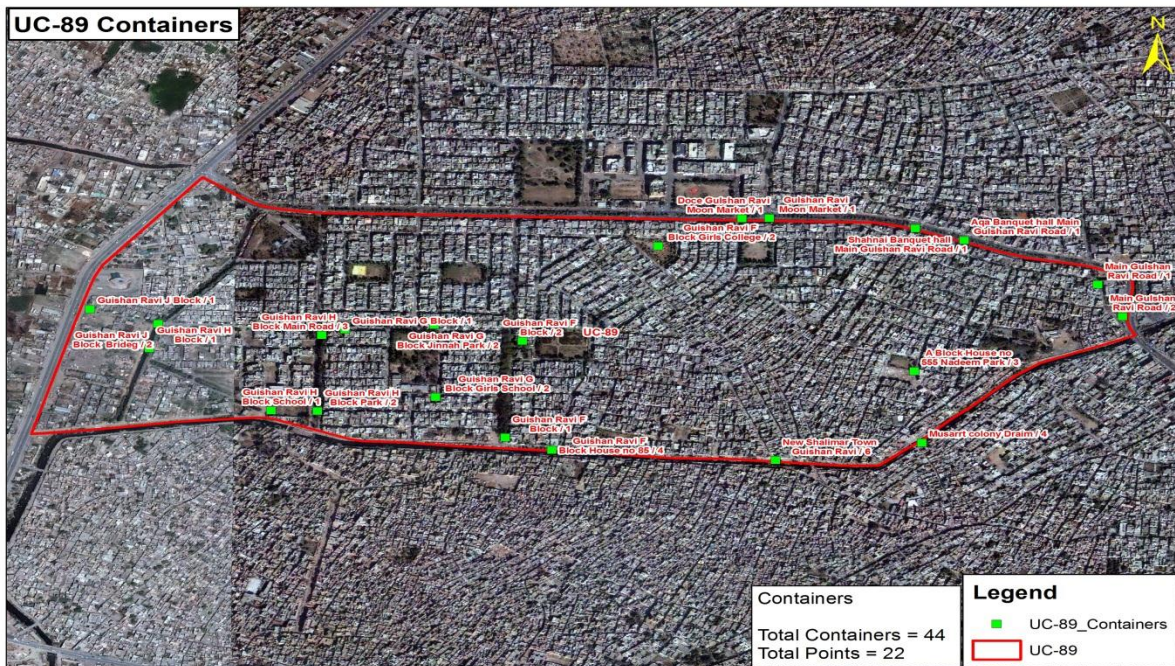
##### **7.2 Existing Points of Containers**

Sr. No.	Container Location	No. of Containers
1	Main road Gulshan-e-ravi near grid station nallah	2
2	Saqib plaza gulshan-e-ravi	1
3	Jameela nursery gulshan e ravi	1
4	Aqa Bankuet hall gulshan-e-ravi	1
5	Moon market gulshan-e-ravi	2
6	J block gulshan-e-ravi	1

**Özkartallar Campak Joint Venture  
Sikandriya workshop 2**

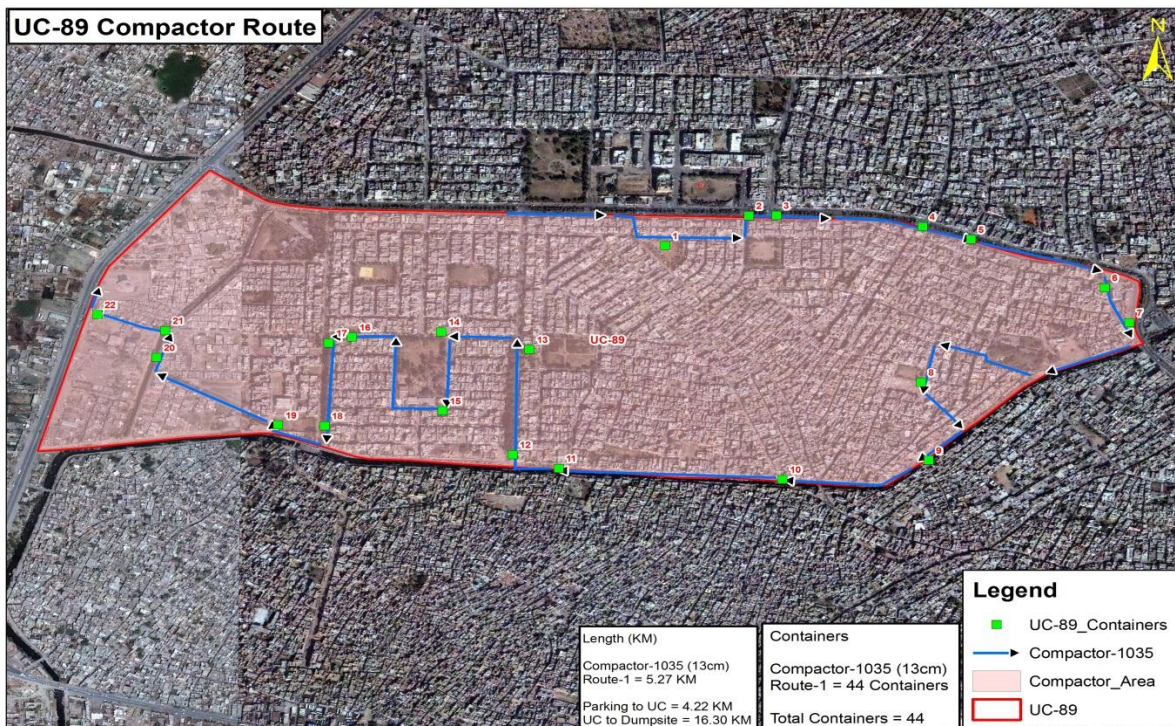
7	J block pull	2
8	Jameyat hospital H block	1
9	H block near WASA office	3
10	WASA tubewell H block	2
11	Jameyat school h block	1
12	394 b block plot	2
13	B block Zubair park	2
14	B block near Khaliq masjid	1
15	85 F, Ganda nallah	4
16	Super market Gulshan-e-ravi ganda nallah	6
17	Ganda Nallah musserat colony	5
18	555 A block Gulshan-e-ravi	4
19	Gov. Degree college	2
20	Gov. girls high school	2
21	Jameyat school	1
	Total containers	46

**Özkartallar Campak Joint Venture**  
**Sikandriya workshop 2**  
 Existing Points of Containers



**8 Solid Waste Collection & Transportation**

**8.1 Route for Compactor**



**Özkartallar Campak Joint Venture**  
**Sikandriya workshop 2**

**8.2 Staff Deployment for Compactor Vehicle**

Conservancy Staff Zone-18										
Muhammad Noman (0300-5001056)										
Supervisor = Ijaz-u-Din (0321-4243018 , 0312-7557534)				Supervisor = Ali			Supervisor =			
1st shift				2nd shift			3rd shift			
UC	Compactor	Driver Name & Mobile	Helpers	Vehicle No.	Driver Name & Mobile	Helpers	Vehicle No.	Name of Driver & Mobile	Helpers	
84	1017	Kaiser Masih (03014141911)	Riaz	1021 All Uc's	Ishfaq	Aslam				
			Rafique							
87	1046	M. Yousaf (0321-4563896)	Khawar							Nazir
			Shamoon							
	1059	Javed (0324-4706079)	Safdar							Nadeem
			Arif							
88	1112	Imanual (0306-6049554)	Bashir			1112 All Uc's				Chana Masih (0324-4929902)
			Arif							
89	1038	Malik Murtaza (0333-4800363)	Naeem		Nil					
			Imran							
90	1035	Irfan Sultan (03224133648)	Robin		Nil					
			Karamat							
91	1106	M. Tufail (0300-8134441)	Yousaf	1130 All Uc's	Asad Sindho (03134429902)		Nil			
			Latit							
92	1022	Akbar (0300-4287854)	Abbas							
			Sharfat							
All UC's Main Roads	1130	Tariq Ali	James	1093	Imran Altaf	Riaz				
			Allaudin							
	1070	Francies (0323-4719055)	Rafique				Sadiq			
			Pervaiz							
Extra Vehicles	1093					Jeera				
	1021					Jalal				



**Özkartallar Campak Joint Venture**  
**Sikandriya workshop 2**

Extra Drivers	Shafiq Tahir	Extra Drivers	SunnyAnwar				
	Asif Munir						

## 9 Door To Door Waste Collection

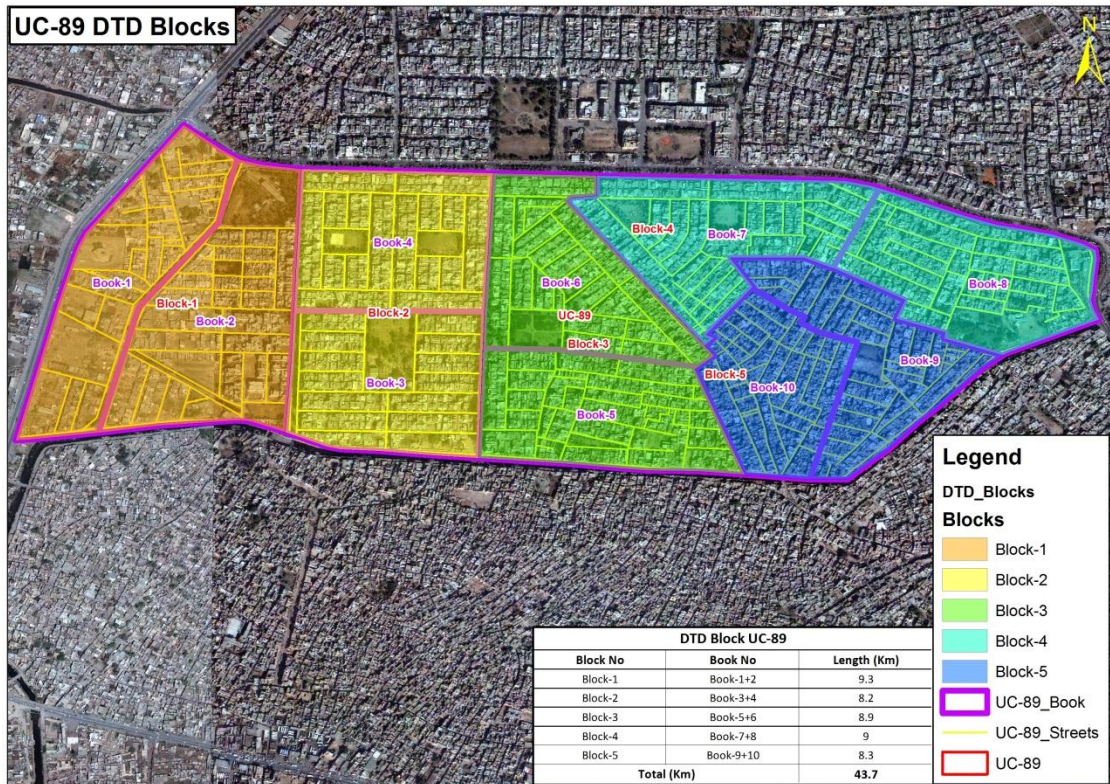
### 9.1 System for D-T-D Waste Collection

- 1 Pickup for door to door waste collection
- Waste collected by pickup will be unloaded into nearby Compactor or transfer station.
- Compactors are also collecting waste if found in waste bags on road or in front of home or shop

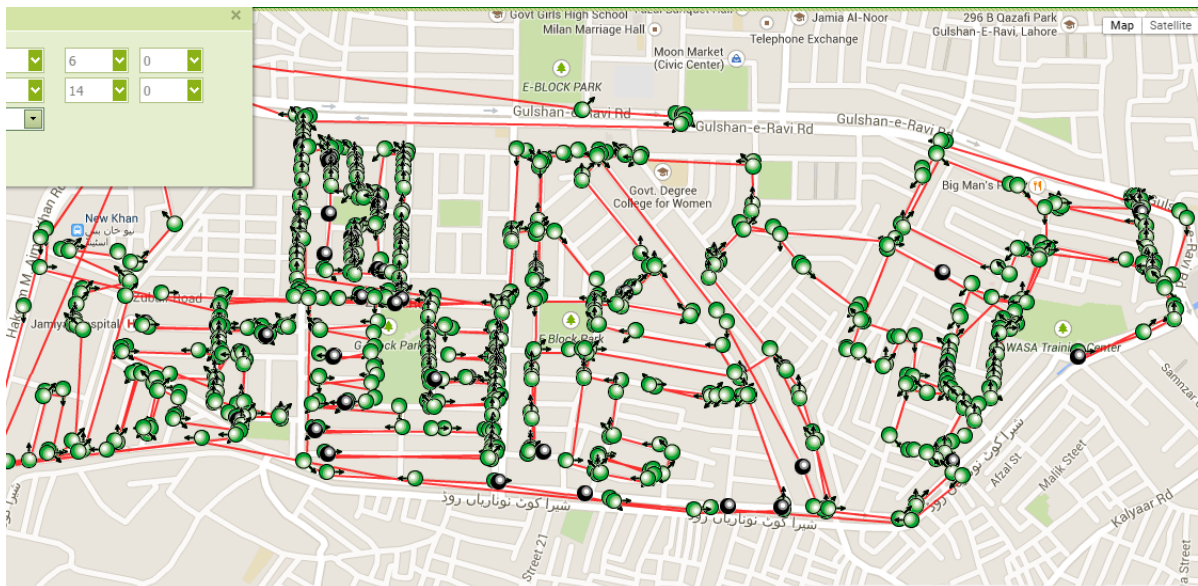
Block	Major Areas/ Mohalla's	Timings
Block 1	Ring road link streets	6:00 am to 8:00 am
	J block	
	Factory Area	
	I Block	
Block 2	H Block	8:00 am to 11:00 am
	Jameyat hospital	
	F block	
Block 3	Ganda Nallah	11:00 am to 12:00 pm
	F block	
	Nonareyan bridge	
Block 4	A block	12:00 pm to 1:00 pm
	Gulshan ravi main	
	Mian colony	
Block 5	Wasa colony	1:00 pm to 2:00 pm
	Nadeem park	
	New Shalimar colony	

# Özkartallar Campak Joint Venture Sikandriya workshop 2

## DTD Blocks Map

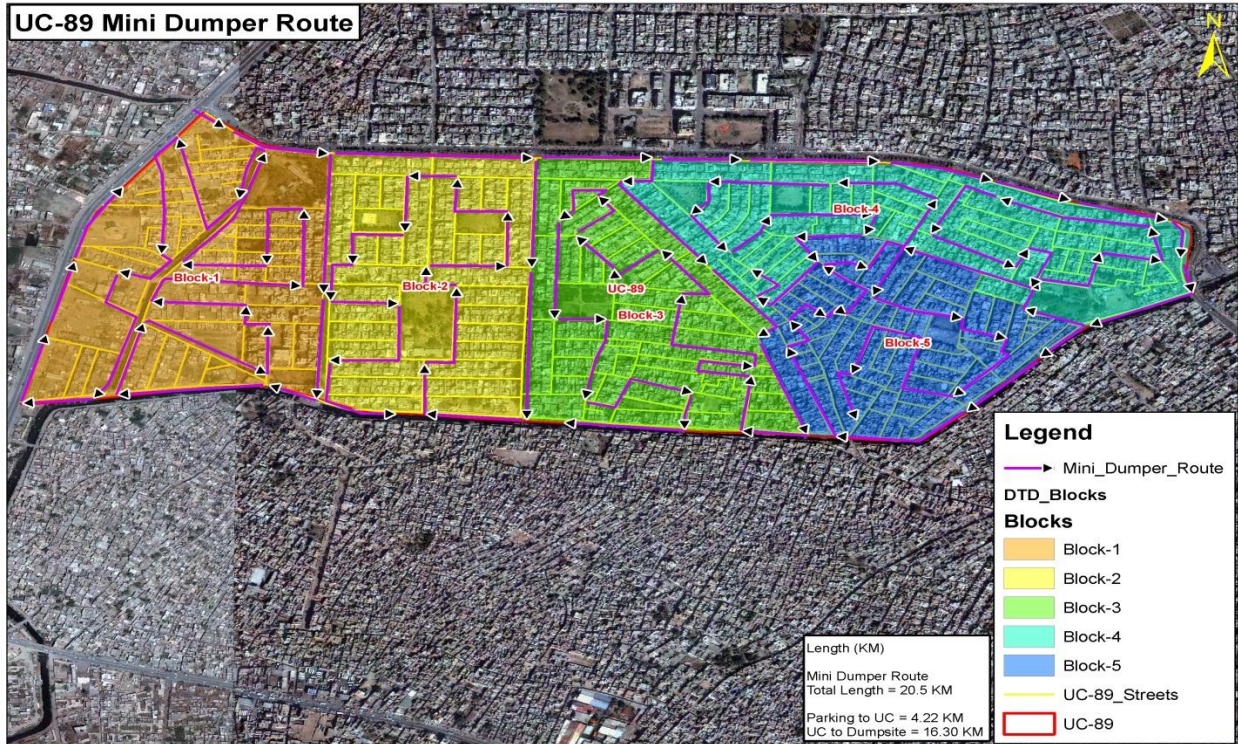


## DTD ROUTE MAP



## Mini Dumper Route Map

**Özkartallar Campak Joint Venture  
Sikandriya workshop 2**



**10 2nd Shift Operational Arrangement**

Manual Sweeping - Special Gang		
Shift In-charge	1	
Sanitary Workers	28	
Note: for taking care of whole Zone-18, attending major roads, markets, 1139 complaints and to coordinate compactors and ensure containers collection.		
Containers Collection		
Compactors	1	C-1112, 2 trip (approx. 8 to 10 tons)
Note: attending 3 UC's 88, 89 & 90		

**Major Areas**

- Wasa mor
- Jinnah market
- Ganda Nallah
- Nadeem park
- New Shalimar Colony

**Özkartallar Campak Joint Venture  
Sikandriya workshop 2**

**11 Problematic Areas**

**Ganda nallah**

Ganda Nallah is one of main problematic area of UC 89.

Observations:

- Poor sweeping due to bad infrastructure
- Waste heaps unattended.
- Containers overflowing at ganda nallah



**Özkartallar Campak Joint Venture**  
**Sikandriya workshop 2**

Recommendations:

- Proper lifting of open waste heaps.
- Use of garbage bags for open heaps.
- Ensuring zero waste around containers.

**12 Open Plots:**

Almost in all UC's of zone open plots are exist. These open plots are major hurdle in cleaning operation. To maintain the cleaning of open plots is quiet hard because of the immature attitude of residence and walking people (non-residence).

Solid waste types:

Different solid waste types are observed in these open plots.

- Inorganic
- Organic
- C & D waste
- Green Waste

Measurements:

To maintain the cleaning of open plots an operational strategy has been developed and also door to door waste collection has been focused more to make open plots cleaning operation more effective.

Group activity:

15-20 people group activity has arranged on regular basis to cover-up the cleaning of open plots.... Machinery is also used to clean up where an open plot cannot be handled with manual sweeping.

**Özkartallar Campak Joint Venture  
Sikandriya workshop 2**



**13 Public Awareness**

- Distribution of leaflets along-with bags distribution has been done as per contract.
- Announcement of waste collection when pickup will move in the area
- Involvement of public representatives in mass awareness campaign